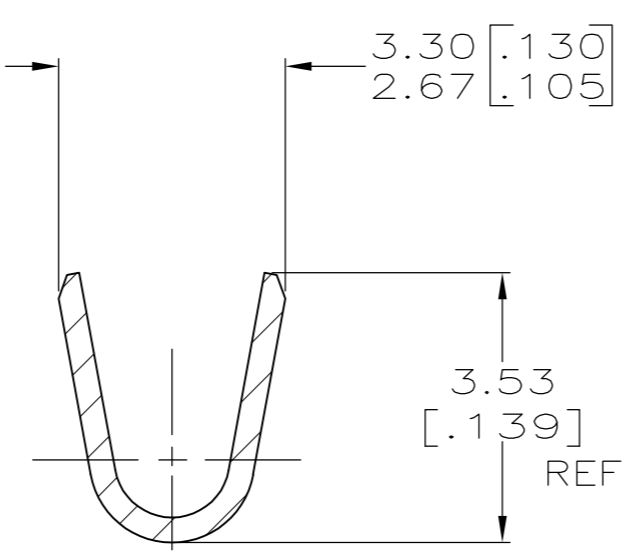
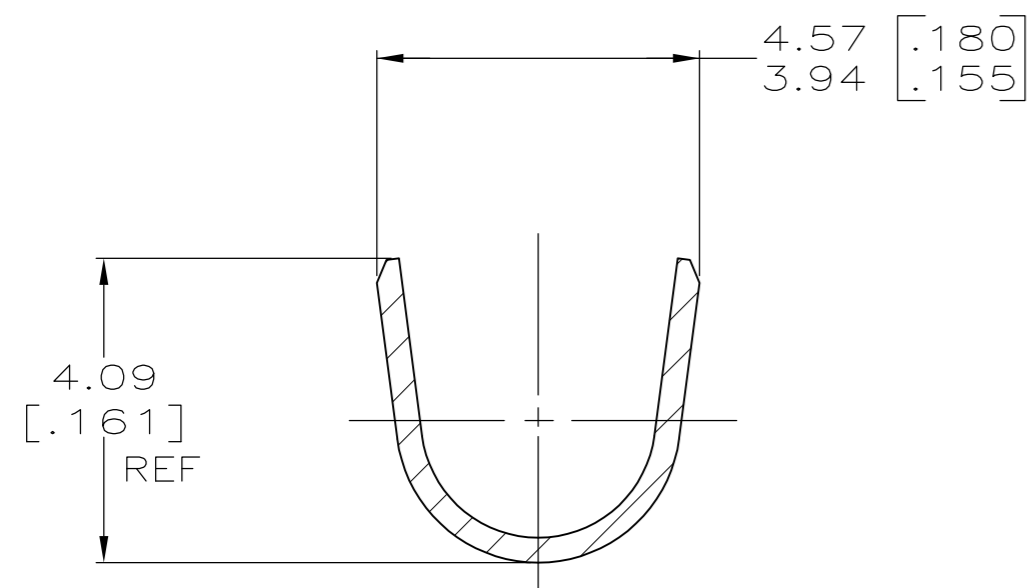
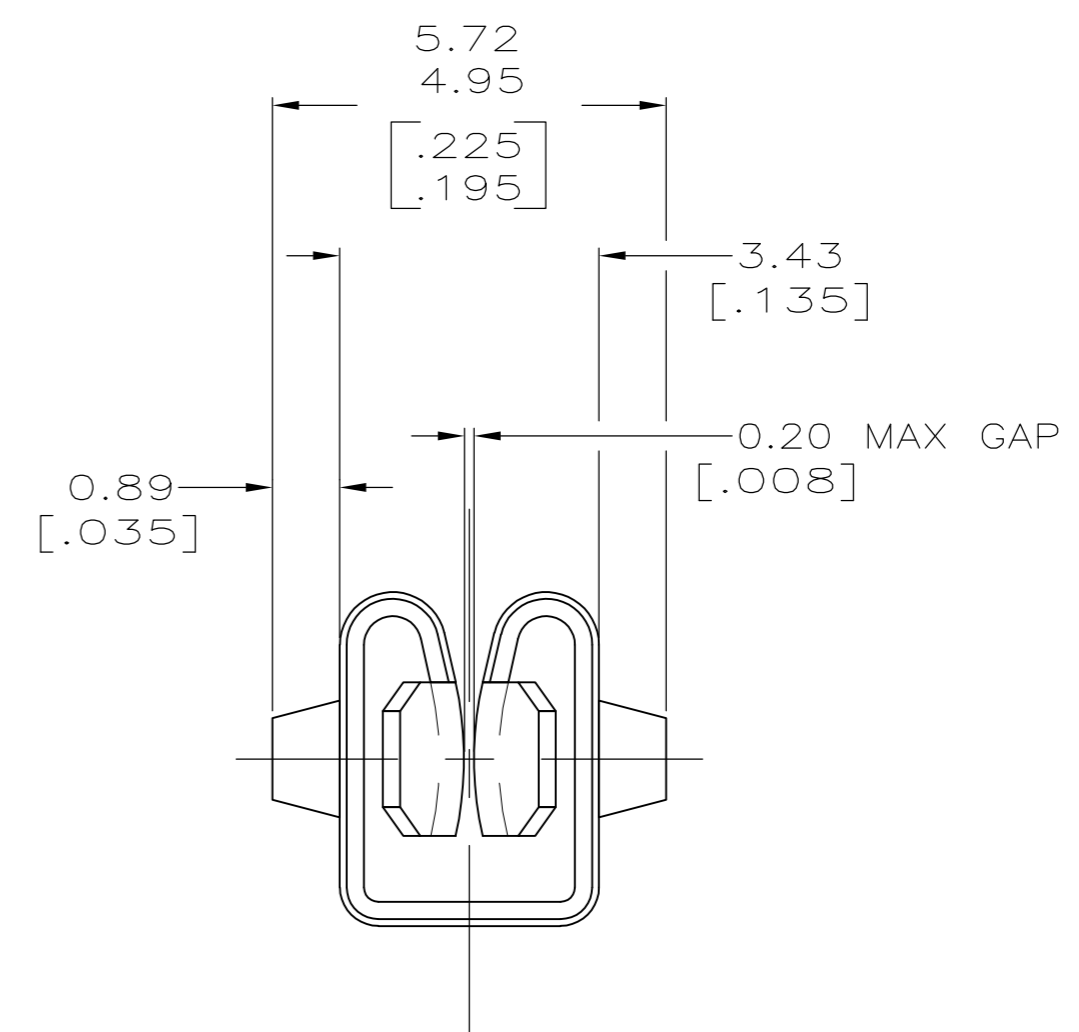
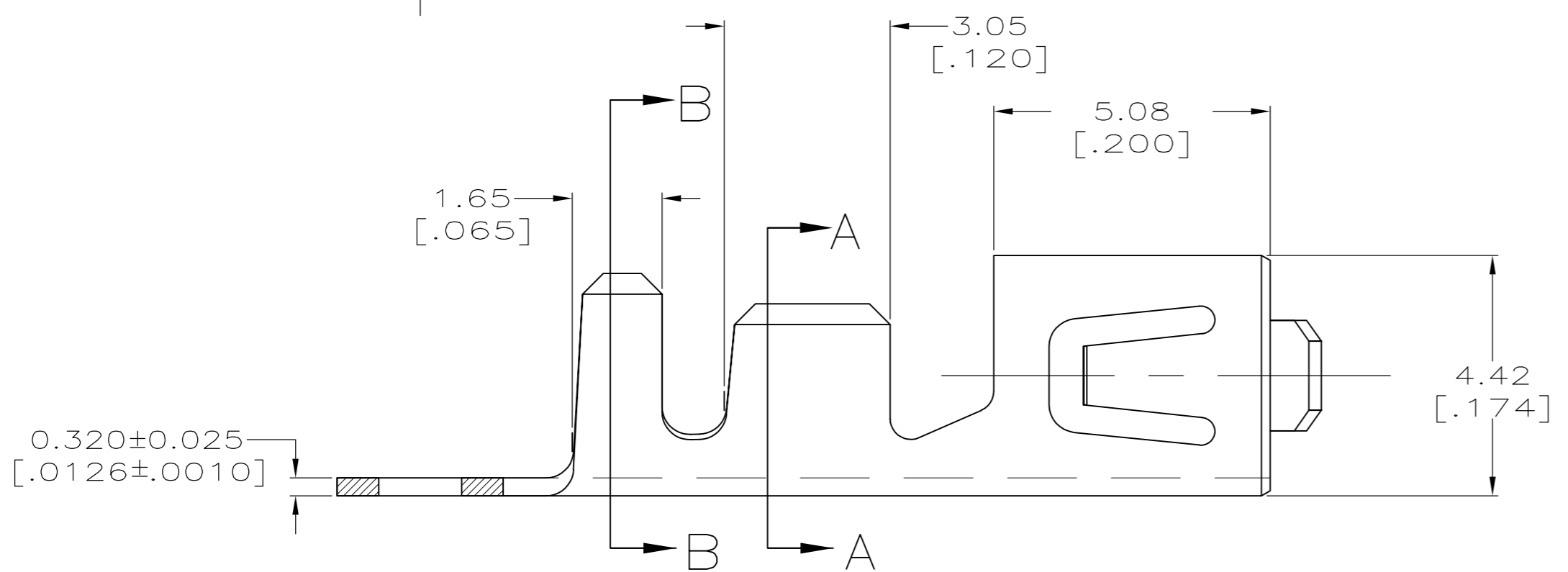
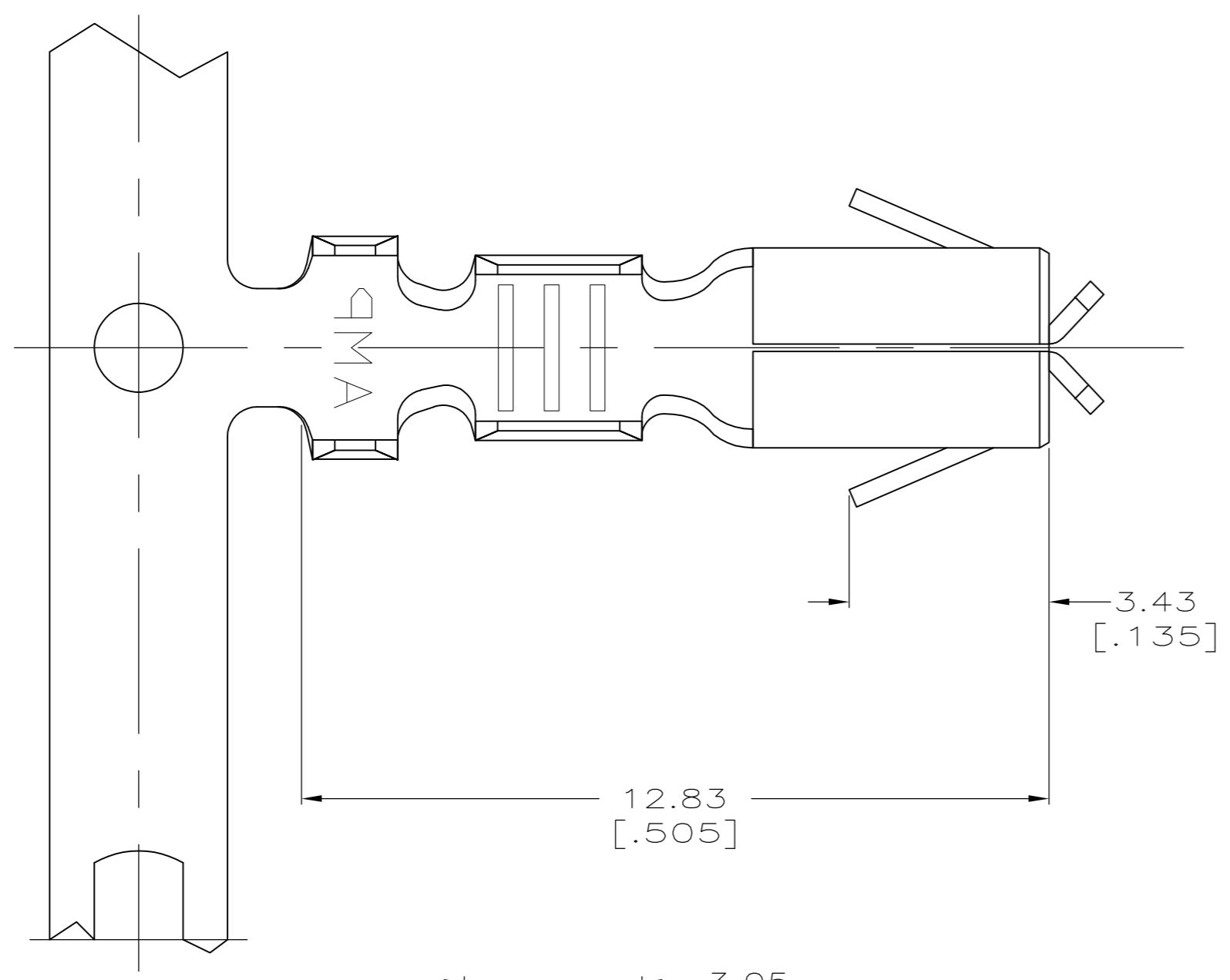


THIS DRAWING IS UNPUBLISHED. RELEASED FOR PUBLICATION  
 © COPYRIGHT BY TYCO ELECTRONICS CORPORATION. ALL RIGHTS RESERVED.

LOC	DIST	REVISIONS			
P	LTR	DESCRIPTION	DATE	DWN	APVD
AF	50	Y1	REVISED PER ECR-07-008696	04MAY07	HMR JK

- 1 CONTINUOUS STRIP ON REELS.
- 2 TERMINAL TO ACCEPT A 0.51 [.020] X 3.18 [.125] TIN PLATED TAB.
- 3 THIS PART TO BE USED WITH HOUSING PART NUMBERS; 480553 AND 480556.
- 4 0.000381 [.000015] MIN PRE-TIN PLATE.
- 5 0.002032 [.000080] MIN POST-TIN PLATE.
- 6 PREPRODUCTION - F.A.S.R. REQUIRED.



OBSOLETE	5	H06 BRASS	2.16-3.18 [.085-.125]	#20-#14 AWG	61603-5
OBSOLETE	NONE	SPRING COPPER	2.16-3.18 [.085-.125]	#20-#14 AWG	61603-4
OBSOLETE	4	SPRING COPPER	2.16-3.18 [.085-.125]	#20-#14 AWG	61603-3
OBSOLETE	NONE	H06 BRASS	2.16-3.18 [.085-.125]	#20-#14 AWG	61603-2
	4	H06 BRASS	2.16-3.18 [.085-.125]	#20-#14 AWG	61603-1
FINISH	MATERIAL	INSULATION RANGE	WIRE RANGE	PART NUMBER	

THIS DRAWING IS A CONTROLLED DOCUMENT.

DIMENSIONS: mm [INCHES]	TOLERANCES UNLESS OTHERWISE SPECIFIED: 0 PLC ± - 1 PLC ± - 2 PLC ± 0.25[.010] 3 PLC ± - 4 PLC ± - ANGLES ± -	DWN MICHAEL S. FEHER 24AUG2000 CHK DONALD DECKER 25AUG2000 APVD DONALD DECKER 25AUG2000	tyco Electronics Tyco Electronics Corporation Harrisburg, Pa 17105-3608
MATERIAL H06 BRASS	FINISH PRE-TIN PLATE	PRODUCT SPEC APPLICATION SPEC WEIGHT -	NAME TERMINAL, TIMER CONNECTOR
CUSTOMER DRAWING		SCALE 10:1	SHEET 1 OF 1 REV Y1